



PAR1 (Cleaved-Ser42) Polyclonal Antibody

Cat #: ABP59821

Size: 30µl /100µl /200µl

Product Information

	Product Name: PAR1 (Cleaved-Ser42) Polyclonal Antibody		
	Applications: WB, ELISA		Isotype: Rabbit IgG
	Reactivity: Human, Mouse, Rat		
REF	Catalog Number: ABP59821	LOT	Lot Number: Refer to product label
	Formulation: Liquid		Concentration: 1 mg/ml
	Storage: Store at -20°C. Avoid repeated freeze / thaw cycles.		Note: Contain sodium azide.

Background: F2R (Coagulation Factor II Thrombin Receptor) is a Protein Coding gene. Diseases associated with F2R include Macrocytic Anemia, Refractory, Due To 5Q Deletion, Somatic and Cardiomyopathy, Hypertrophic, 2. Among its related pathways are Calcium signaling pathway and ADP signalling through P2Y purinoceptor 1. F2R is a G-protein coupled receptor family member. Alternative splicing results in multiple transcript variants.

Application Notes: Optimal working dilutions should be determined experimentally by the investigator. Suggested starting dilutions are as follows: WB (1:500-1:2000), ELISA (1:10000-1:20000).

Storage Buffer: PBS, pH 7.4, containing 0.02% Sodium Azide as preservative and 50% Glycerol as stabilizer.

Storage Instructions: Stable for one year at -20°C from date of shipment. For maximum recovery of product, centrifuge the original vial after thawing and prior to removing the cap. Aliquot to avoid repeated freezing and thawing.

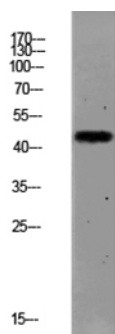


Fig.1. Western blot analysis of MCF-7 lysate, antibody was diluted at 1:1000. HRP, Goat Anti-Rabbit IgG (Cat #: A21020) secondary antibody was diluted at 1:20000.

Note: The product listed herein is for research use only and is not intended for use in human or clinical diagnosis. Suggested applications of our products are not recommendations to use our products in violation of any patent or as a license. We cannot be responsible for patent infringements or other violations that may occur with the use of this product.